



Wall Mounted Junction Box type HT-XX for easy access terminals

www.elcor.no



Wall mounted junction box type HT-XX for heat tracing and easy access terminals Equipped with:


- M25 entries for power cables / heating cables
- Phoenix UT terminals
- Snap off DIN rail for easy access.
- All entries equipped with dust plugs.
- For nVent/Raychem Heat Trace cables

Technical data:

Material: AISI316L/EN 1.4404

Protection: IP66/67

Ex-protection:

ATEX  II 2G Ex e IIC T6 Gb

IECEx: Ex e IIC T6 Gb

Finish: Bright chemical dip

Voltage: Max: 500V / 32Amp

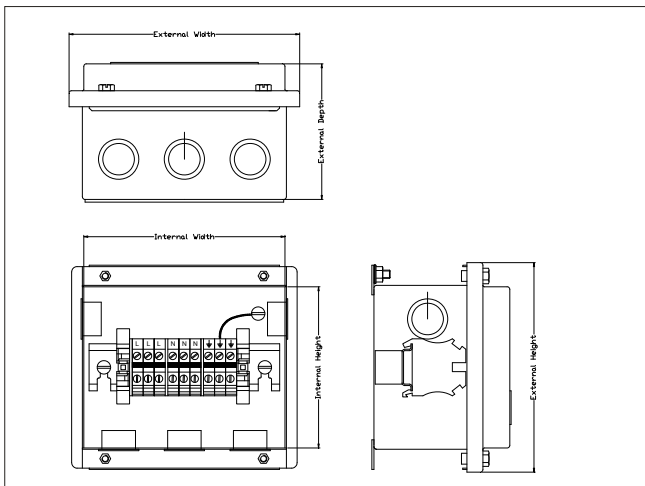
Approval: Nemko 14ATEX1001X

IECEx NEM 14.0003X

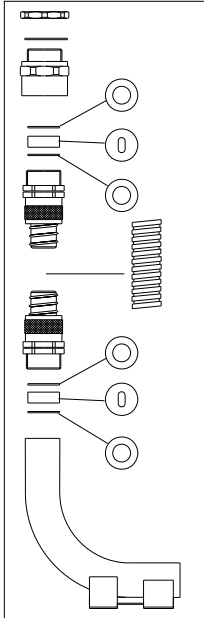
Ta:

Standard: $-20^{\circ}\text{C} \leq T_a \leq +40^{\circ}\text{C}$ EPDM gasket

Artic: $-40^{\circ}\text{C} \leq T_a \leq +40^{\circ}\text{C}$ Silicone gasket



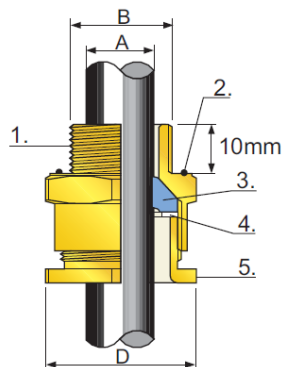
Description	External Dimension (WxHxD)	Internal Dimension (WxHxD)	Weight	Elcor Part no.	El.no.
HT-10 W, 4 entries M25	136x141x82	100x120x75	1,1 kg	1000.310	1284825
HT-20 W, 5 entries M25	173x154x82	150x120x75	1,5 kg	1000.320	1284826
HT-30 W, 7 entries M25	176x174x103	155x140x100	1,9 kg	1000.330	1284827
HT-40 W, 10 entries M25	241x174x103	220x140x100	2,5 kg	1000.340	1284828
HT-60 W, 6 entries M25	202x156x103	180x120x100	1,8 kg	1000.360	1284829



Description	Elcor part no.
Protection kit for heating cable with single slot grommet 5x11 and 5x15	1702.100
Flexible conduit Ø25 for protection kit. 2M	1400.100
Flexible conduit Ø25 for protection kit. 25M	1400.200

RA2E

1. - Entry Component
2. - O-ring seal
3. - Flameproof seal
4. - Skid Washer
5. - Outer Seal Nut



Description	Elcor part no.
CMP RA2E M25 Cable gland Ø11,9-19,9 w/lock nut	2005.415
CMP M25 Stopping plug w/lock nut	2005.416
Drainplug M25 w/lock nut	2005.410



Wall Mounted Junction Box type HT-XX for easy access terminals

www.elcor.no

Type / Model	Minimum Terminal / Conductor Cross-Section	Max load:	Max number of terminals
HT-01	2.5 mm ²	16 A.	10
HT-10	4 mm ²	20 A.	10
HT-02	2.5 mm ²	16 A.	10
HT-20	4 mm ²	20 A.	10
	6 mm ²	25 A.	8
	10 mm ²	32 A.	8
HT-03	2.5 mm ²	16 A.	12
HT-30	4 mm ²	20 A.	12
HT-06	6 mm ²	25 A.	9
HT-60	10 mm ²	32 A.	8
HT-04	2.5 mm ²	16 A.	14
HT-40	4 mm ²	20 A.	12
	6 mm ²	25 A.	10
	10 mm ²	32 A.	10
Smartbox-A	2.5 mm ²	16 A.	10
101010	4 mm ²	20 A.	10
Smartbox-A	2.5 mm ²	16 A.	10
151010	4 mm ²	20 A.	10
	6 mm ²	25 A.	8
	10 mm ²	32 A.	8
Smartbox-A	2.5 mm ²	16 A.	14
201510	4 mm ²	20 A.	12
	6 mm ²	25 A.	10
	10 mm ²	32 A.	10
Smartbox-A	2.5 mm ²	16 A.	14
202010	4 mm ²	20 A.	12
	6 mm ²	25 A.	10
	10 mm ²	32 A.	10